

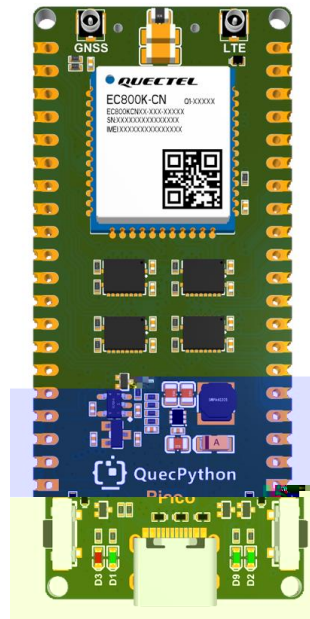
EC800X Pico



1

HF 33 S HF 33
HF 33P HF 33N H 33N HF 33H

S 7 I SF



4

S HF 33

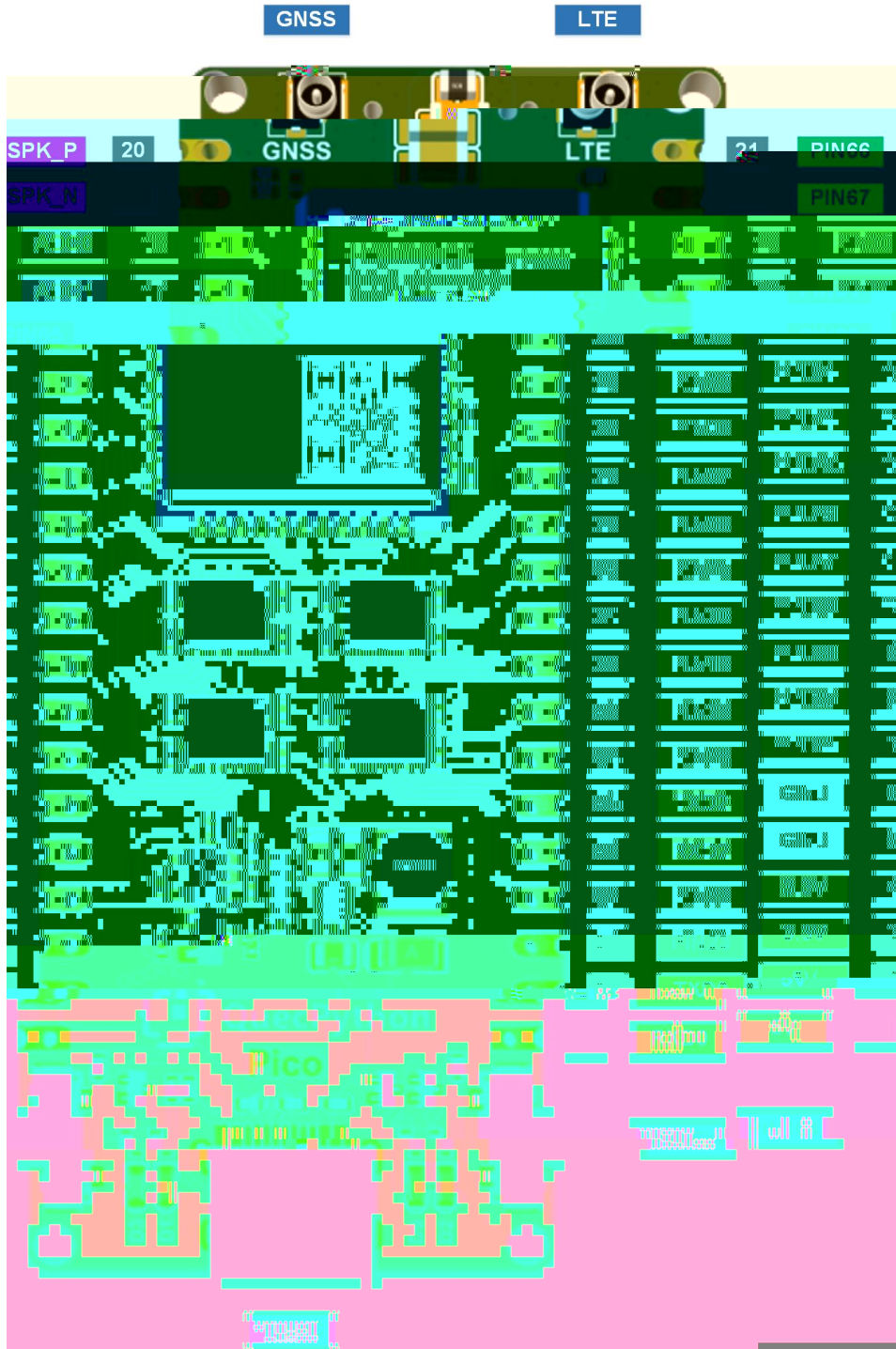
- HF 33 4
- F
- 73 5 19 98 18 GLS 419 SFE
- 63 616 SIR
- 5 DGF
- 5 4 4
- 7 DU / 5 15F / 6 VSL / 7 S P

-
-
- 2

F

73

T S



57	SIQ64	L̄R	616
58	SIQ65	L̄R	616
59	SIQ66	L̄R	616
5:	SIQ89	L̄R	616
5	SIQ8:	L̄R	616
5	SIQ8	L̄R	616
63	SIQ58	L̄R	616
64	SIQ53	L̄R	616
65	SIQ4	L̄R	616
66	SIQ5	L̄R	616
67	SIQ5	L̄R	616
68	G5		616
69	U G5		616
6:	SIQ55	L̄R	616
6	SIQ56	L̄R	616
6	G3		616
73	U G3		616

4

8

F

73

4 5

8

5D

F

8

VE

VE

5

D

448533

D

7 33 933 4 533 6 733 8: 933

448533 563733 793 33 54933

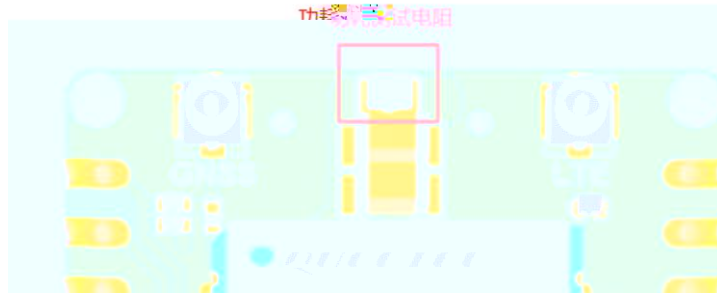
D

F T S

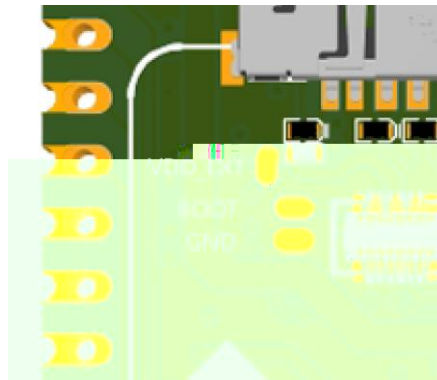
DU 5

6

/

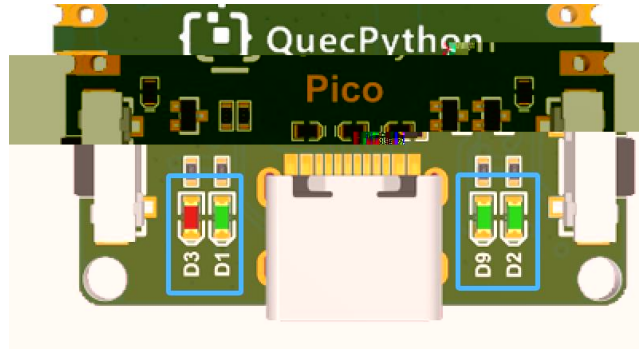


7 ERR



	ERR		ERR	
HF	33P2N	ERR	QG	ERR

7 G6



G4

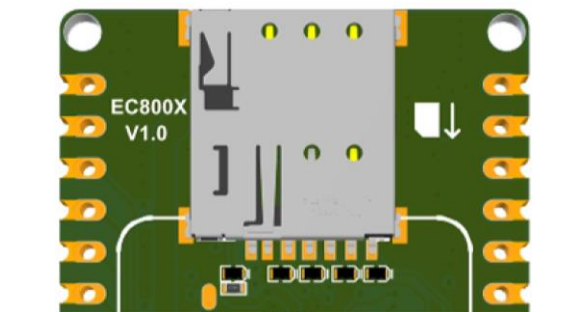
5

G4	533	24 33
	4 33	2533
	458	2458

G5 G

: 8 3

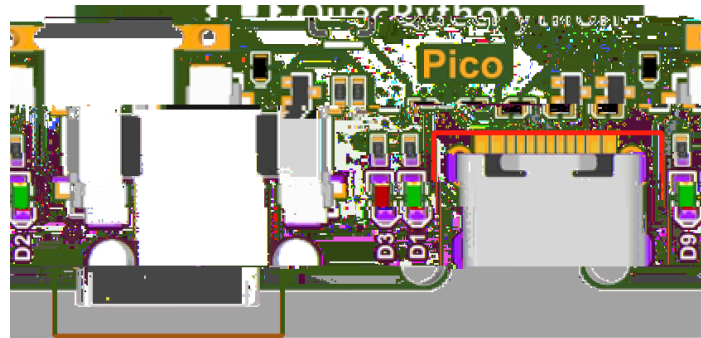
3 SIM



QDQR VIP VIP H VL IP -5333

41 613 VIP

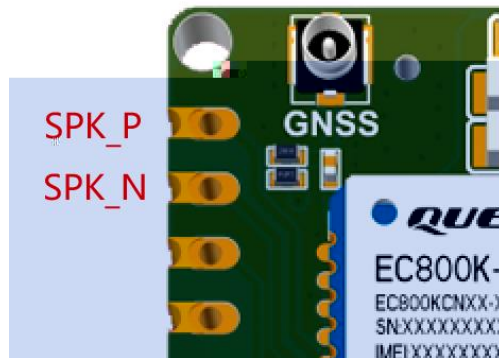
4 USB



4 F VE VE VE
 5B VE 5B 7 3 P 45 P
 D QVV QP HD

5 SPK

4



●

●

@(U @65

DE

6:

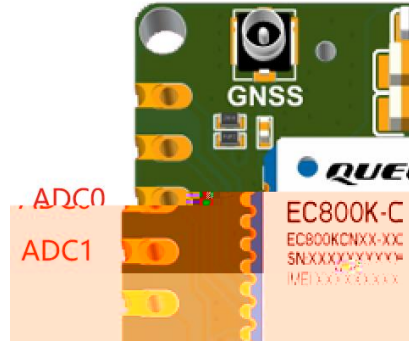
KG

/

6 ADC

5

DGF

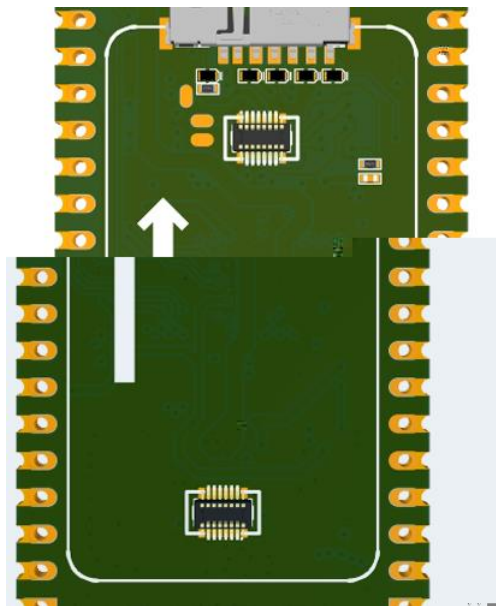


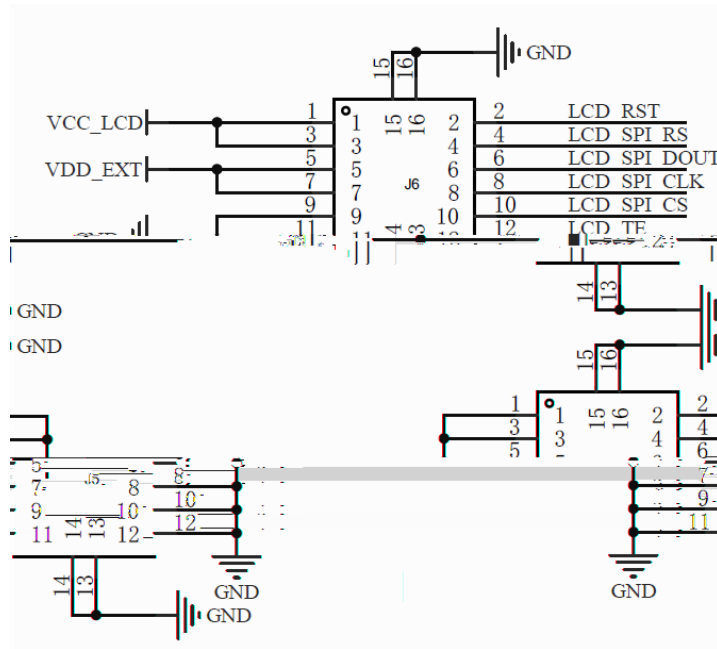
6 DGF

参数	最小值	典型值	最大值	单位
ADC0 电压	0	-	1.2	V
ADC1 电压	0	-	1.2	V
ADC 分辨率	-	-	12	位

7 LCD

QFG





47: 4: 5U E 653 - I OFG

7 OFG

NO.	Item	Contents	Unit
1	LCD Size	1.47	inch
2	Display Mode	Normally black	-
3	Resolution	172(H)RGB x320(V)	pixels
4	Pixel pitch	0.0337(H) x 0.1011(V)	mm
5	Active area	17.3892(H) x 32.352(V)	mm
6	Module size	40.00(H) x 20.00(V) ± 0.10 (D)	mm

NO.	Item	Contents	Unit
7	Pixel Arrangement	RGBW Vertical Stripe	-
8	Interface	4 Line SPI	-
9	Display Colors	262K	colors
10	Drive IC	ST7789V3	-
11	Luminance(cd/m ²)	350 (TYP)	Cd/m ²
12	Viewing Direction	All View	Best ima
13	Backlight	3 White LED Parallel	-
14	Operating Temp.	-20℃~ +70℃	℃
15	Storage Temp.	-30℃~+ 80℃	℃
16	Weight	2.7	g

8

8

引脚名	引脚号	I/O	描述	备注
ANT_MAIN	35	AIO	主天线接口	50 Ω 特性阻抗。

备注

模块支持 Wi-Fi Scan 功能。由于共用主天线接口，两种功能不可同时使用，时分复用，Wi-Fi Scan 只接收不发送。

9

工作频段	发送 (dBm)	接收 (dBm)
7~2170	19.8~19.8	19.8~19.8
7~1880	19.8~19.8	19.8~19.8
7~1920	19.8~19.8	19.8~19.8
7~2400	19.8~19.8	19.8~19.8
5~2675	19.8~19.8	19.8~19.8

7~2025	LTE-TDD B34	2010~2025	2010
7~2620	LTE-TDD B38	2570~2620	2570
7~1920	LTE-TDD B39	1880~1920	1880
7~2400	LTE-TDD B40	2300~2400	2300
5~2675	LTE-TDD B41	2535~2675	2535

:

频段	最大值	最小值
LTE-FDD B1/B3/B5/B8	23 dBm ±2 dB	< -39 dBm
LTE-TDD B34/B38/B39/B40/B41	23 dBm ±2 dB	< -39 dBm

频段	接收灵敏度（典型值）（dBm）			3GPP 要求 （主集 + 分集）
	主集	分集	主集 + 分集	
LTE-FDD B1 (10 MHz)	-99.5 dBm	-	-	-96.3 dBm
LTE-FDD B3 (10 MHz)	-99.0 dBm	-	-	-93.3 dBm
LTE-FDD B5 (10 MHz)	-98.5 dBm	-	-	-94.3 dBm
LTE-FDD B8 (10 MHz)	-99.0 dBm	-	-	-93.3 dBm
LTE-TDD B34 (10 MHz)	-100.0 dBm	-	-	-96.3 dBm
LTE-TDD B38 (10 MHz)	-99.0 dBm	-	-	-96.3 dBm
LTE-TDD B39 (10 MHz)	-100.0 dBm	-	-	-96.3 dBm
LTE-TDD B40 (10 MHz)	-100.5 dBm	-	-	-96.3 dBm
LTE-TDD B41 (10 MHz)	-99.0 dBm	-	-	-94.3 dBm

- QVV SV EGV ORQDVV
- QPHD 34 6 QPHD D VE
- DU 4K
- QVV D

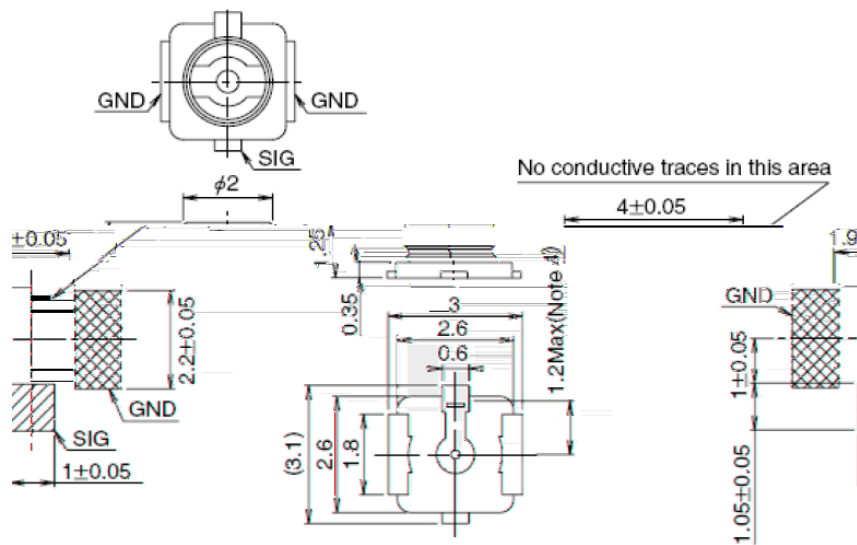
SV	48: 8175 41356 04,	PK
EGV	48943 51379 E4L,	
	48: 8175 51379 H4,	
ORQDVV	48 : 8 49381 04,	

43 QVV

参数	条件	典型值	单位
灵敏度	捕获	-146	dBm
	重捕	-160	
	追踪	-160	
首次定位时间	冷启动 @ 空旷区域	28	s
	温启动 @ 空旷区域	27	
	热启动 @ 空旷区域	3.7 ³	

备注

1. 追踪灵敏度：模块可以保持对导航信号的跟踪和定位所需的最低信号电平（持续定位至少 3 分钟）。
2. 重捕灵敏度：模块接收的导航信号失锁后 3 分钟内，重新捕获导航信号并正常定位所需的最低信号电平。
3. 捕获灵敏度：模块进行冷启动后 3 分钟内，捕获导航信号并成功定位所需的最低信号电平。

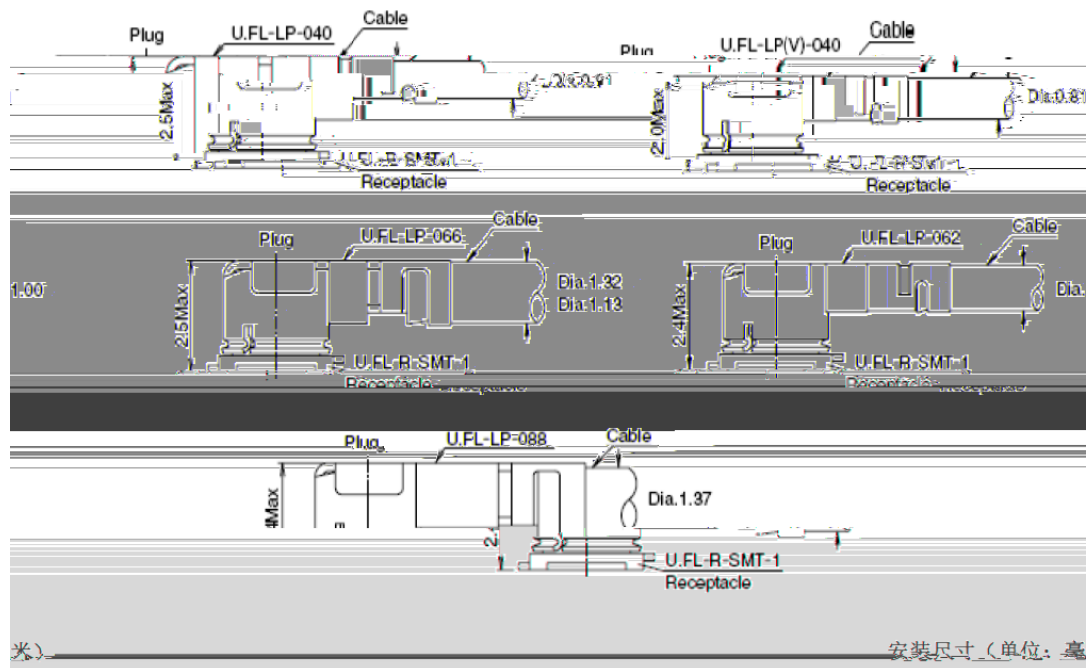


天线连接器尺寸（单位：毫米）

100S

3.4	4	5	4	4	4
2.0mm Max. (1.9mm Nom.)	2.4mm Max. (2.3mm Nom.)	2.4mm Max. (2.3mm Nom.)	2.5mm Max. (2.4mm Nom.)	2.5mm Max. (2.4mm Nom.)	2.5mm Max. (2.4mm Nom.)
Dia. 1.32mm Coaxial cable	Dia. 1.32mm Coaxial cable	Dia. 1.37mm Coaxial cable	Dia. 1.32mm Coaxial cable	Dia. 1.32mm Coaxial cable	Dia. 1.32mm and Coaxial cable
34.8	45.5	71.7	53.7	59.1	
YES					

L-LP_连接线系列 U.F



LSH

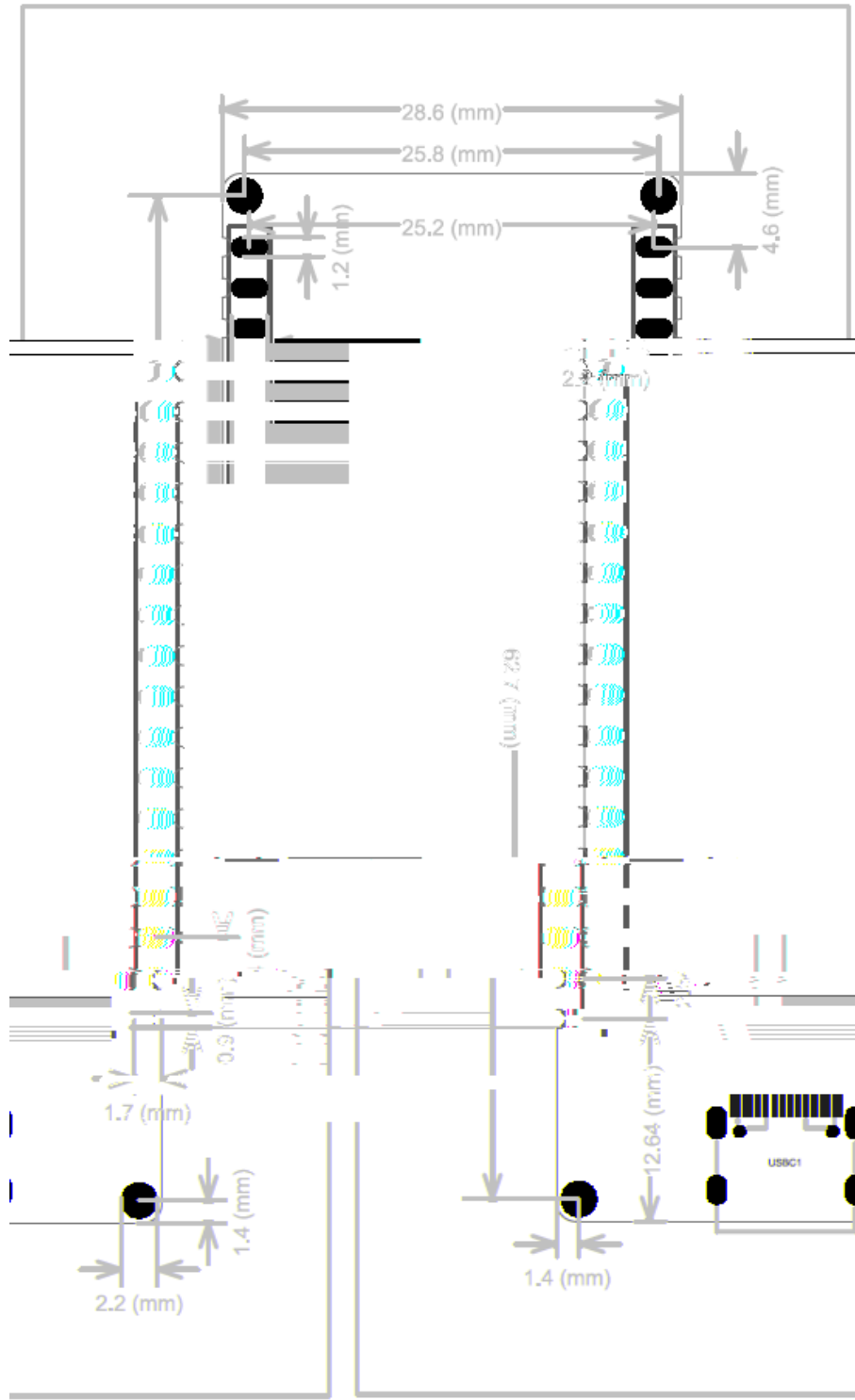
K 2 1- 1

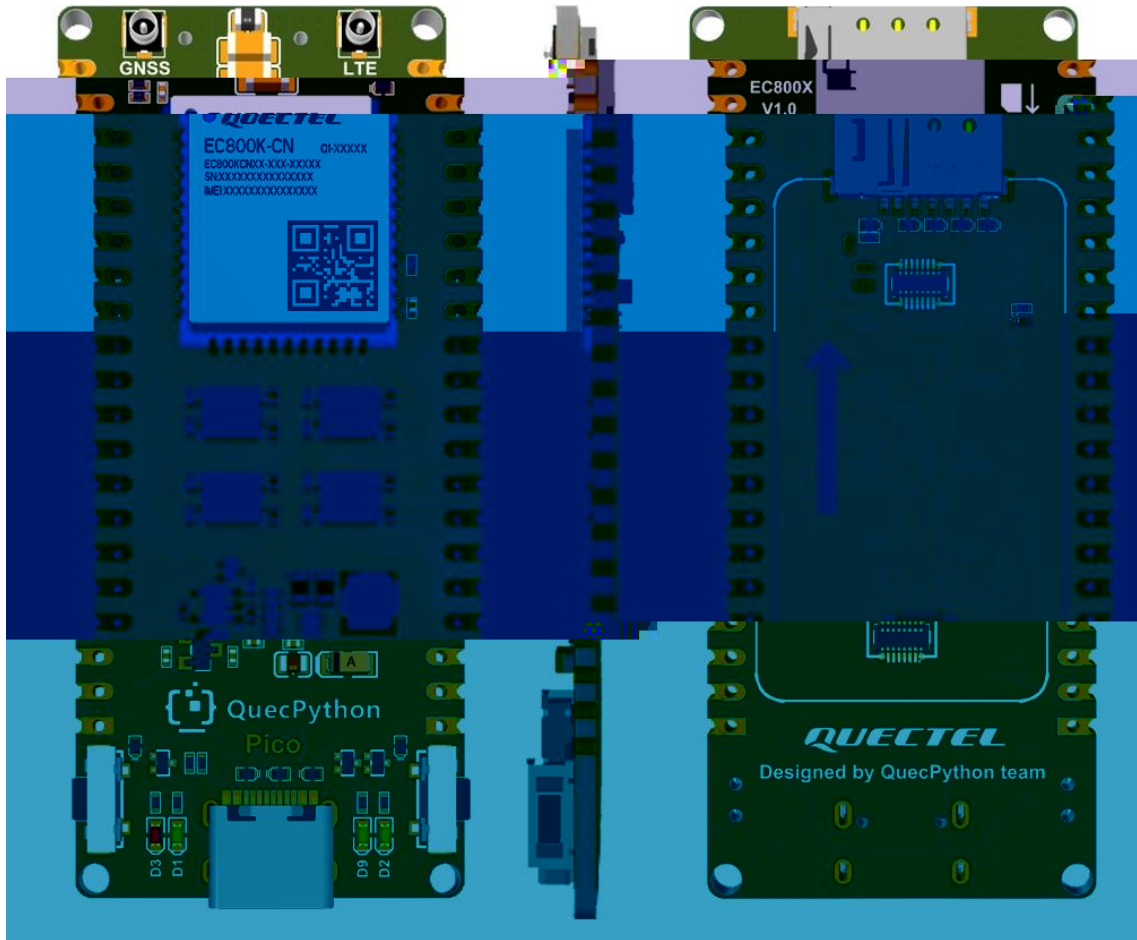
9

44

46 HVG

8	QG	43	N
	VE	43	N
		48	N
	VIP	43	N
		43	N

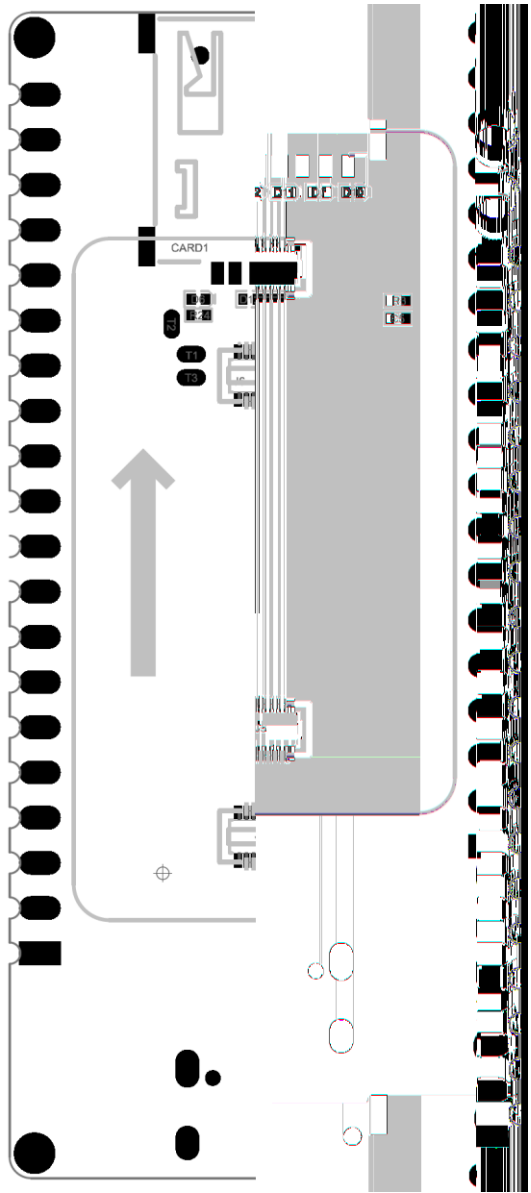
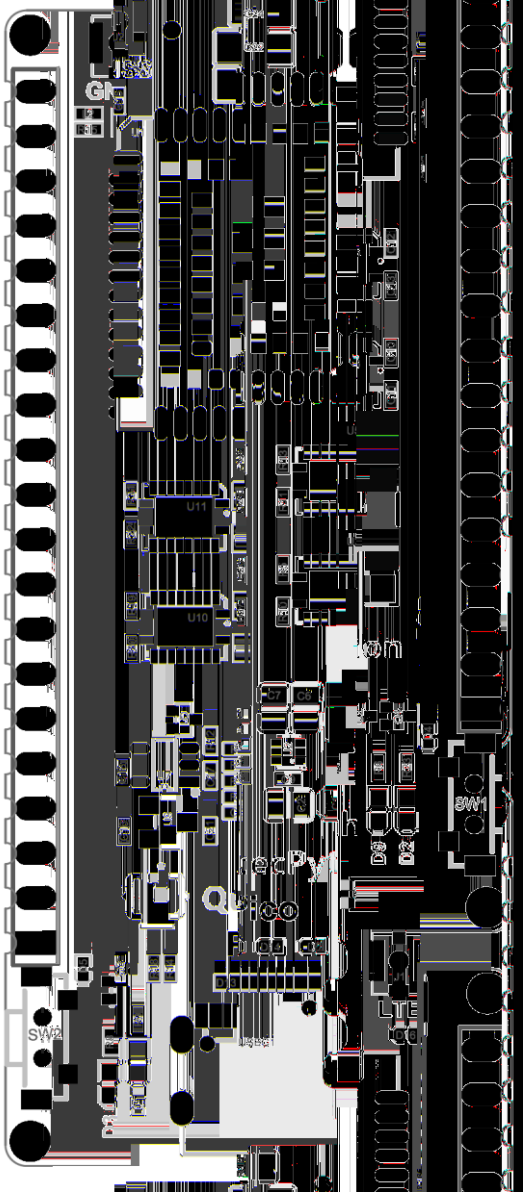


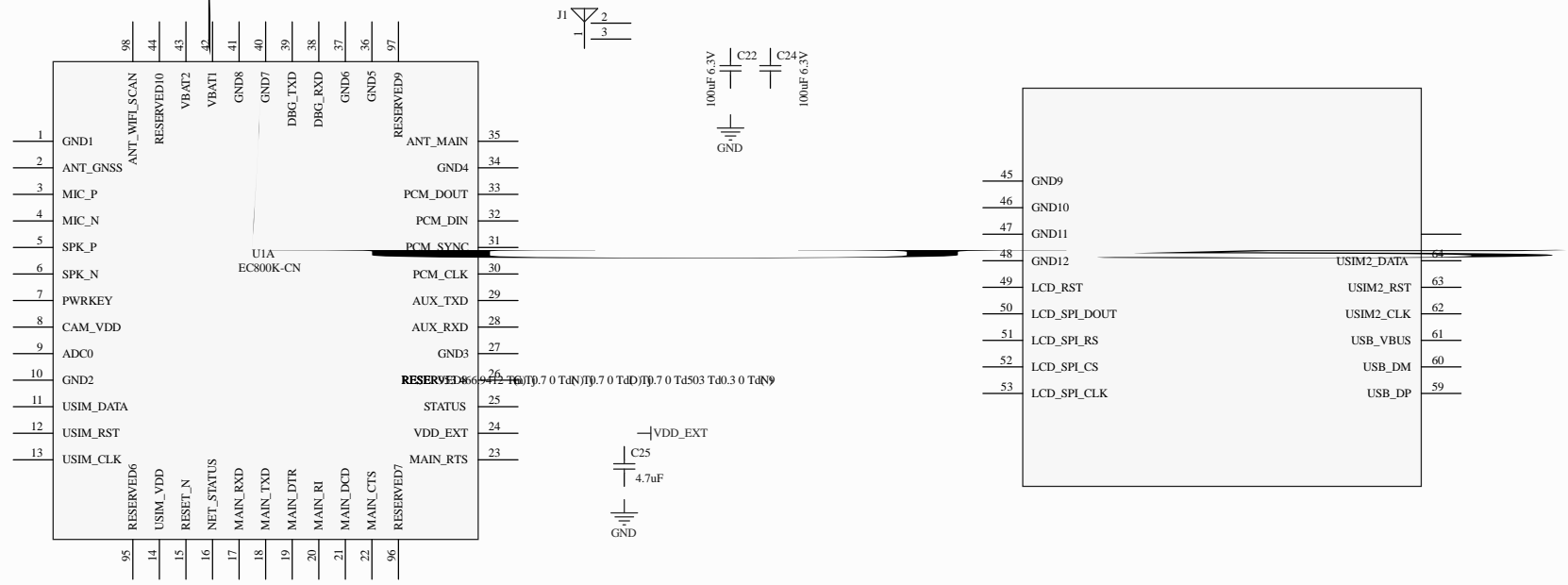


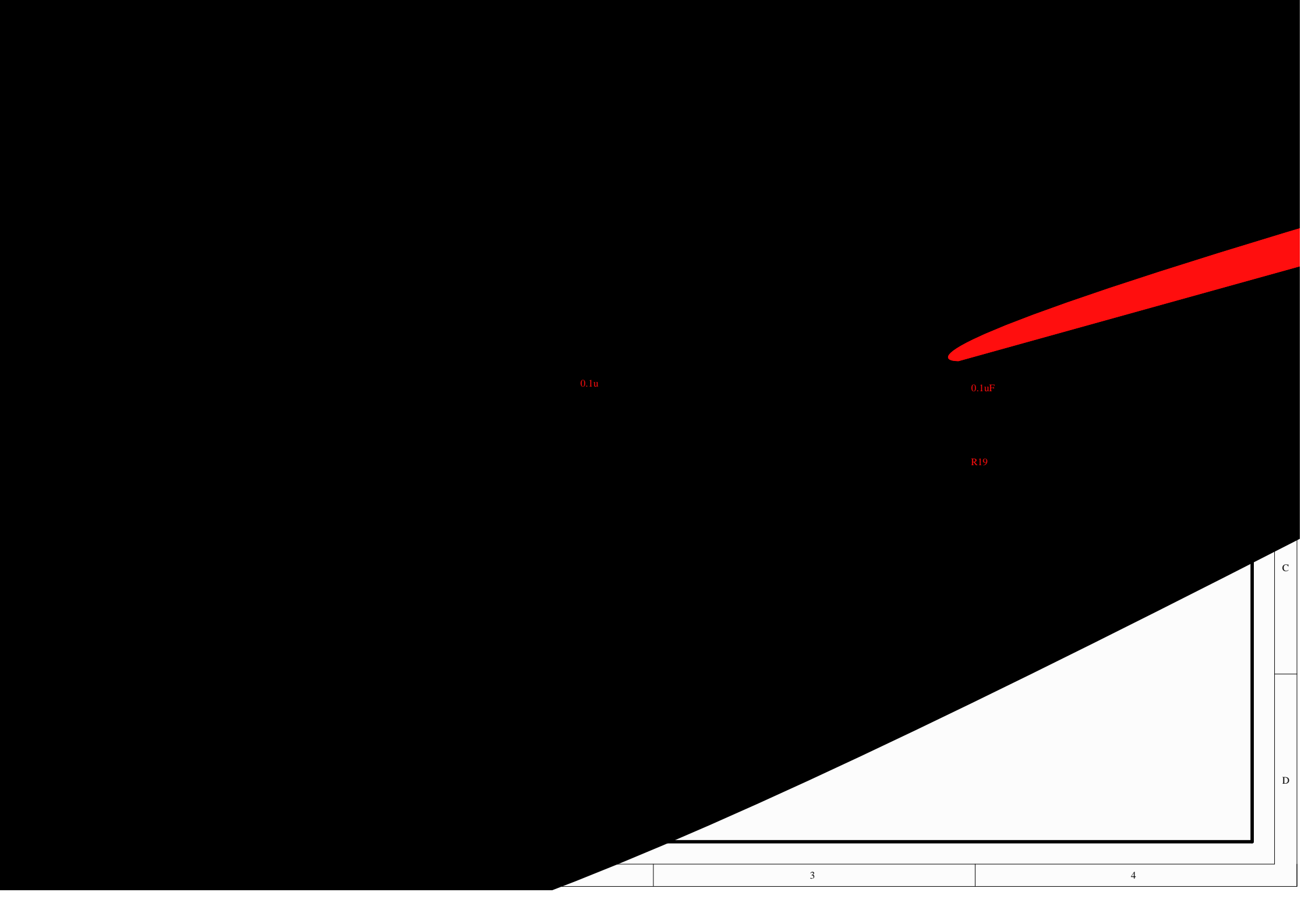
11

4 SF
5

12

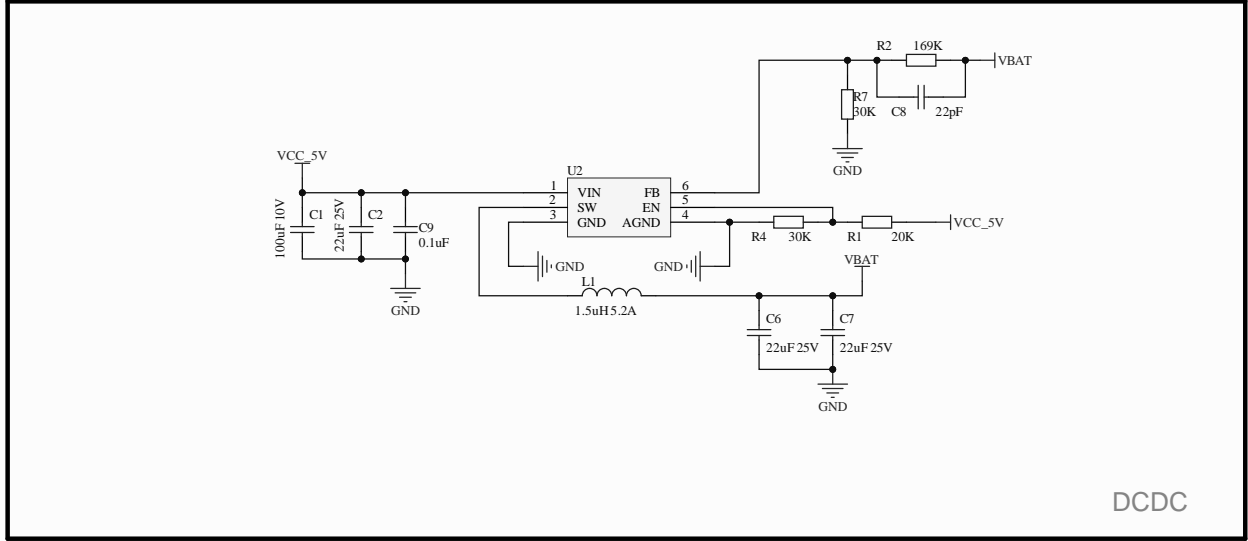








LDO



DCDC

