

# EC800X QuecDuino EVB

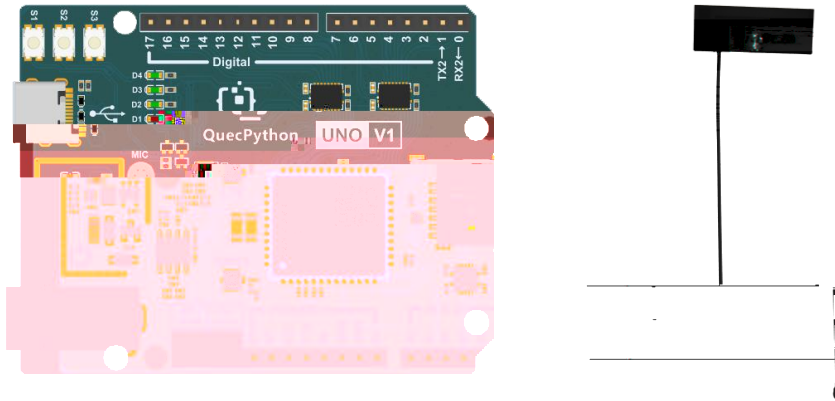


# 1

EC800X QuecDuino EVB                      EC800  
EC800M                      EC800K                      EG800K                      EC800E

## EC800X QuecDuino EVB

QuecDuino EVB 4G FPC



1 EVB

### Features

#### CPU

EC800 / EG800 Module Series

#### Pins

22x digital pins (GPIO), D0-D3,0-17 up to  
2x analog input pins (ADC), A0-A1

#### Peripherals

Antenna Interface,LTE & GNSS(option)

SIM Interface, NANO SIM

USB 2.0, TypeC

Arduino female header Interface

Audio(option)

1xMIC onboard

1x 3W Class-D Stereo Amplifier

#### Power

Recommended input voltage (VIN) is 4.5-5.25 V/2A

Power via USB-C® at 5 V

Power via DC05® at 5-16V

3.3V/200mA output

#### Communication

4x UART (pin 0, 7) up to

1x SPI (pin 10-13, ICSP header)

1x I2C (pin 16, 17, SDA, SCL)

3x KEY(S1-S3)

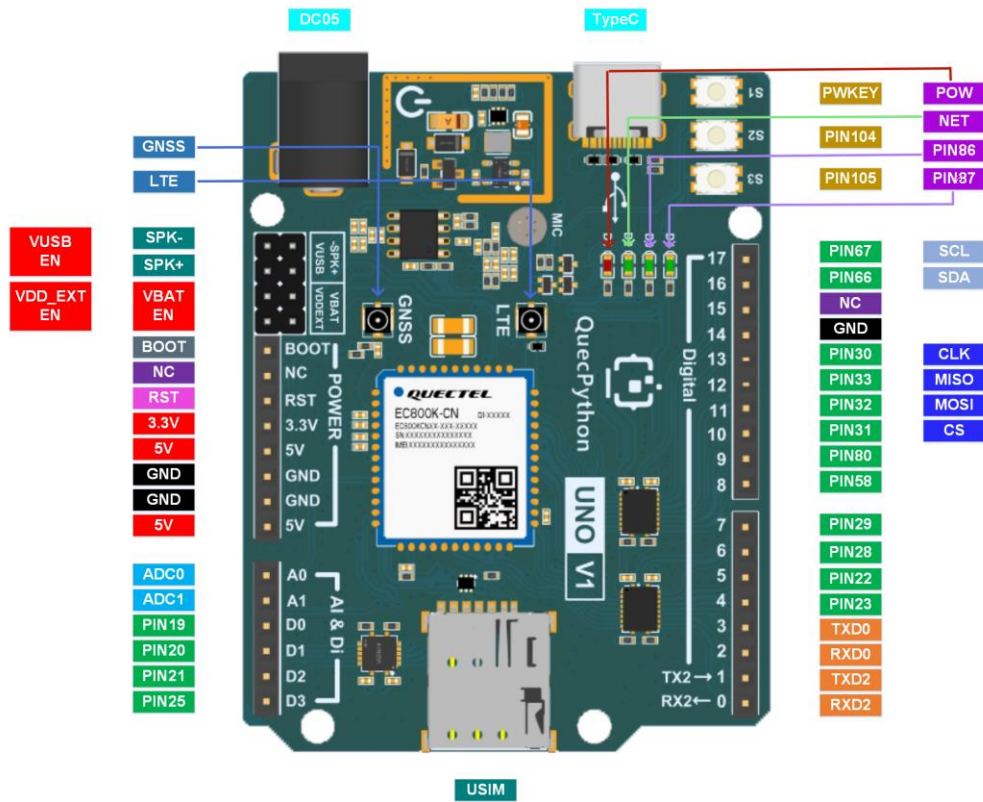
4x LED(D1-D4)

1x RESET(Pull-down reset Module)

1x BOOT(According to different model modules pull up or Pull-down the BOOT pin, Before power-on)

## 2

### 2.1



2 EVB

EVB

VUBS EN VDD\_EXT EN VBAT EN

### 2.2

1

		DC
BOOT	USB_BOOT	
NC		
RST	RESET	

3.3V		3.3V/200mA
5V	/	5V/2A V1.1
GND		
GND		
5V	/	5V/2A V1.1
A0	ADC0	0-1.2 V
A1	ADC1	0-1.2 V
D0	I/O 19	3.3V
D1	I/O 20	3.3V
D2	I/O 21	3.3V
D3	I/O 25	3.3V
0		3.3V
1		3.3V
2		3.3V
3		3.3V
4	I/O 23	3.3V
5	I/O 22	3.3V
6	I/O 28	3.3V
7	I/O 29	3.3V
8	I/O 58	3.3V
9	I/O 80	3.3V
10	I/O 31	3.3V
11	I/O 32	3.3V
12	I/O 33	3.3V
13	I/O 30	3.3V
14		
15	NC	
16	I/O 66	3.3V



BOOT  
BOOT

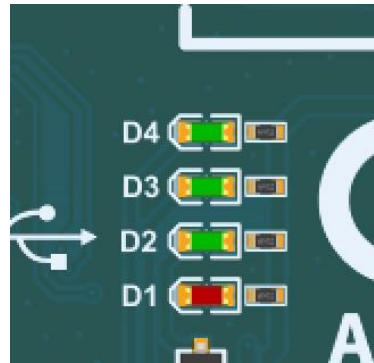
BOOT

BOOT GND

## 2.3

EVB 4

D1



5

D2

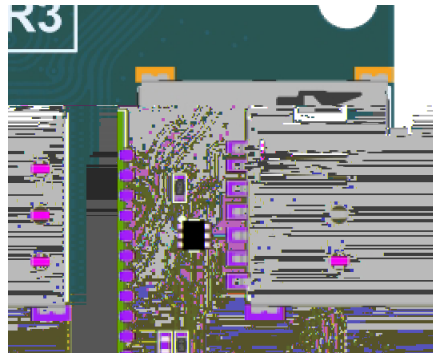
2

D2	200ms /1800ms	
	1800ms /200ms	
	125ms /125ms	

D3 D4

86 87

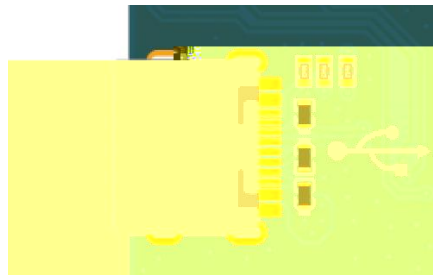
### 3 SIM



6 SIM

EVB	NANO SIM	USIM	ETSI	IMT-2000
1.8 V	3.0 V USIM			

### 4 USB



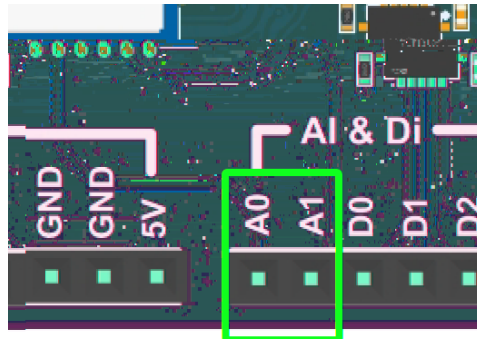
7 USB

EVB	1	TypeC USB	USB	USB 2.0
USB 2.0			480 Mbps	12 Mbps
		AT	GNSS	NMEA

## 5 ADC

EVB 2

ADC



8 ADC

3 ADC

参数	最小值	典型值	最大值	单位
ADC0 电压	0	-	1.2	V
ADC1 电压	0	-	1.2	V
ADC 分辨率	-	-	12	位

## 6

### 6.1

#### 6.1.1

5

引脚名	引脚号	I/O	描述	备注
ANT_MAIN	35	AIO	主天线接口	50 Ω 特性阻抗。

#### 备注

模块支持 Wi-Fi Scan 功能。由于共用主天线接口，两种功能不可同时使用，时分复用，Wi-Fi Scan 只接收不发送。

## 6

工作频段	发送 (MHz)	接收 (MHz)
1920~1980	2110~2170	FDD B34
1710~1785	1805~1880	FDD B33
824~849	869~894	FDD B35
880~915	925~960	FDD B36
2010~2025	2010~2025	LTE-TDD B34
2570~2620	2570~2620	LTE-TDD B38
1880~1920	1880~1920	LTE-TDD B39
2300~2400	2300~2400	LTE-TDD B40
2535~2675	2535~2675	LTE-TDD B41

### 6.1.2

## 7

频点	频段	最大值
39 dBm	FDD B34/B35/B38	23 dBm + 2 dB
39 dBm	FDD B32/B33/B36/B37/B39/B40/B41	23 dBm + 2 dB

### 6.1.3

## 8

频段	接收灵敏度 (典型值) (dBm)			3GPP 要求 (主集 + 分集)
	主集	分集	主集 + 分集	
LTE-FDD B1 (10 MHz)	-99.5 dBm	-	-	-96.3 dBm
LTE-FDD B3 (10 MHz)	-99.0 dBm	-	-	-93.3 dBm
LTE-FDD B5 (10 MHz)	-98.5 dBm	-	-	-94.3 dBm
LTE-FDD B8 (10 MHz)	-99.0 dBm	-	-	-93.3 dBm
LTE-TDD B34 (10 MHz)	-100.0 dBm	-	-	-96.3 dBm
LTE-TDD B38 (10 MHz)	-99.0 dBm	-	-	-96.3 dBm
LTE-TDD B39 (10 MHz)	-100.0 dBm	-	-	-96.3 dBm
LTE-TDD B40 (10 MHz)	-100.5 dBm	-	-	-96.3 dBm
LTE-TDD B41 (10 MHz)	-99.0 dBm	-	-	-94.3 dBm

## 6.2 GNSS

- EVB GNSS GNSS
- GPS BDS GLONASS Galileo
- NMEA 0183 NMEA AT USB
- UART 1 Hz
- GNSS AT

### 6.2.1

9

GPS	1575.42 ±1.023 (L1)	MHz
BDS	1561.098 ±2.046 (B1I)	
Galileo	1575.42 ±2.046 (E1)	
GLONASS	1597.5~1605.8 (L1)	

### 6.2.2 GNSS

10 GNSS

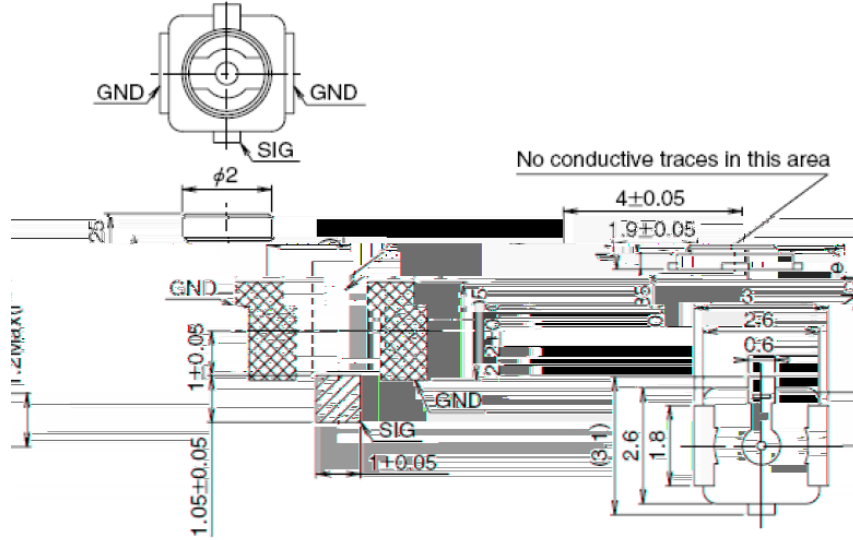
参数	条件	典型值	单位
灵敏度	捕获	-146	dBm
	重捕	-160	
	追踪	-160	
首次定位时间	冷启动 @ 空旷区域	28	s
	温启动 @ 空旷区域	27	
	热启动 @ 空旷区域	27.3	

#### 备注

1. 追踪灵敏度：模块可以保持对已接收信号的跟踪和定位所需的最低信号电平。(持续定位至少2分钟)
--

### 6.3

### EVB



线连接器尺寸 (单位: 毫米)

天

9

mm

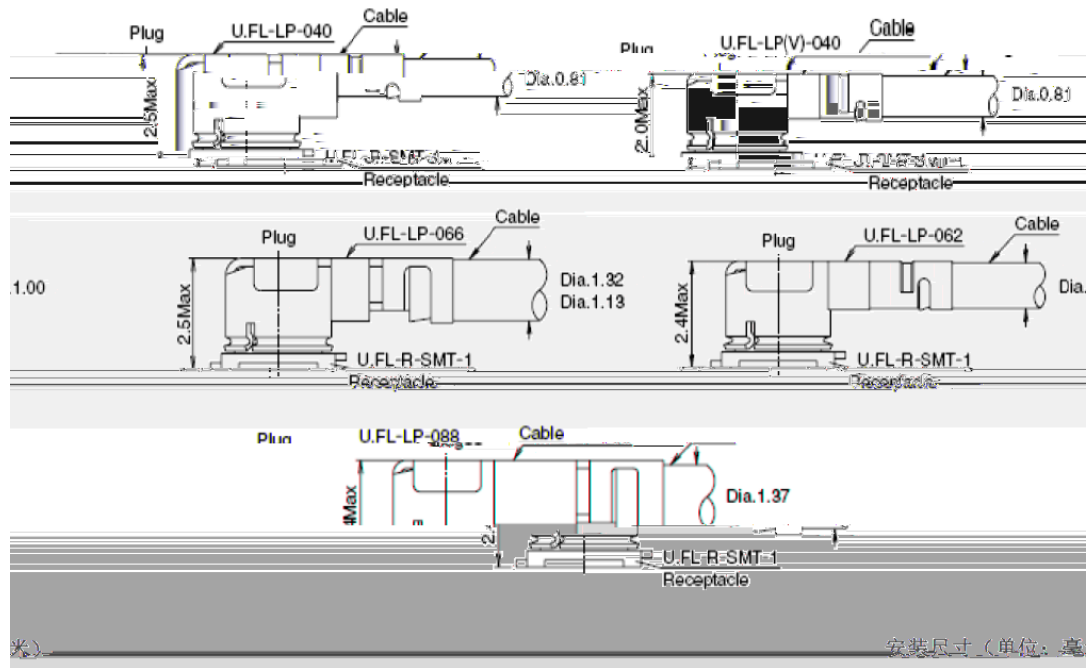
### U.FL-LP

	U.FL-LP-040	U.FL-LP-066	U.FL-LP-040-040	U.FL-LP-062	U.FL-LP-092
Part No.					
Mated Height	2.5mm Max. (2.4mm Nom.)	2.5mm Max. (2.4mm Nom.)	2.0mm Max. (1.9mm Nom.)	2.4mm Max. (2.3mm Nom.)	2.4mm Max. (2.3mm Nom.)
Coaxial cable	Applicable Dia. 0.81mm cable	Dia. 1.03mm and Coaxial cable	Dia. 0.81mm Coaxial cable	Applicable Dia. 1mm Coaxial cable	Dia. 1.27mm Coaxial cable
Weight (mg)	71.7	53.7	59.1	34.8	45.5
RoHS				YES	

U.FL-LP 连接线系列

10

mm



11

mm

IPEX

<https://www.i-px.com>

## 7

### 7.1

11

TypeC	-0.3	6	V
DC	-0.3	16	V
3.3V	-0.3	3.4	V
	-0.3	3.4	V
ADC0	-	1.2	V
ADC1	-	1.2	V
5V	-	2	A

## 7.2

12

TypeC		4.5	5.0	5.25	V
DC		4.5	12	16	V
I	LTE	-	1.5	2	A

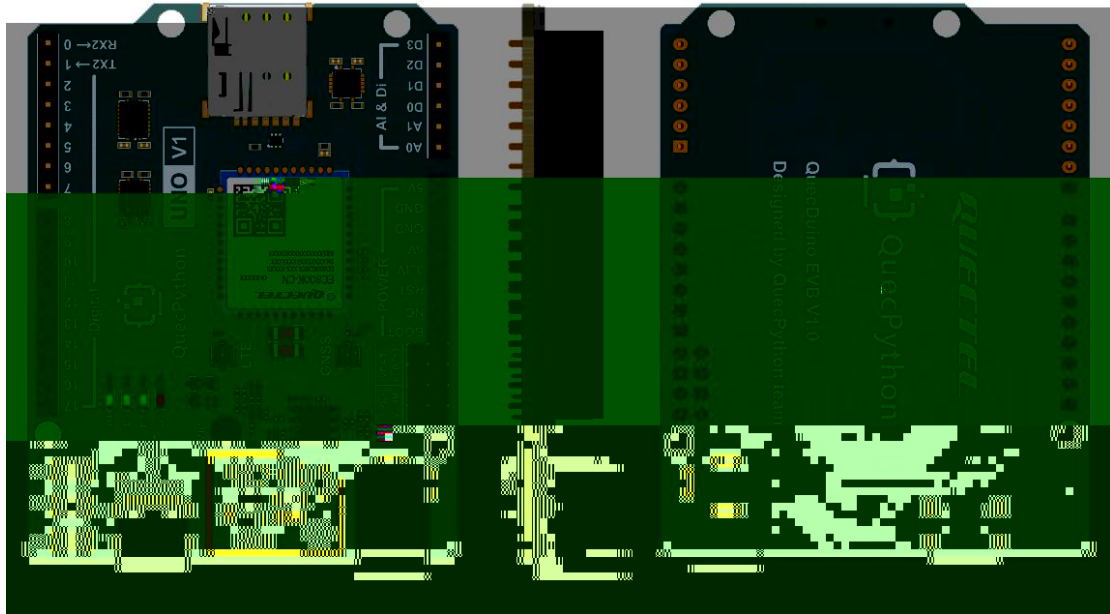
## 7.3

13 ESD

5V GND	$\pm 8$	$\pm 10$		KV
USB	$\pm 8$	$\pm 10$		KV



## 8.2



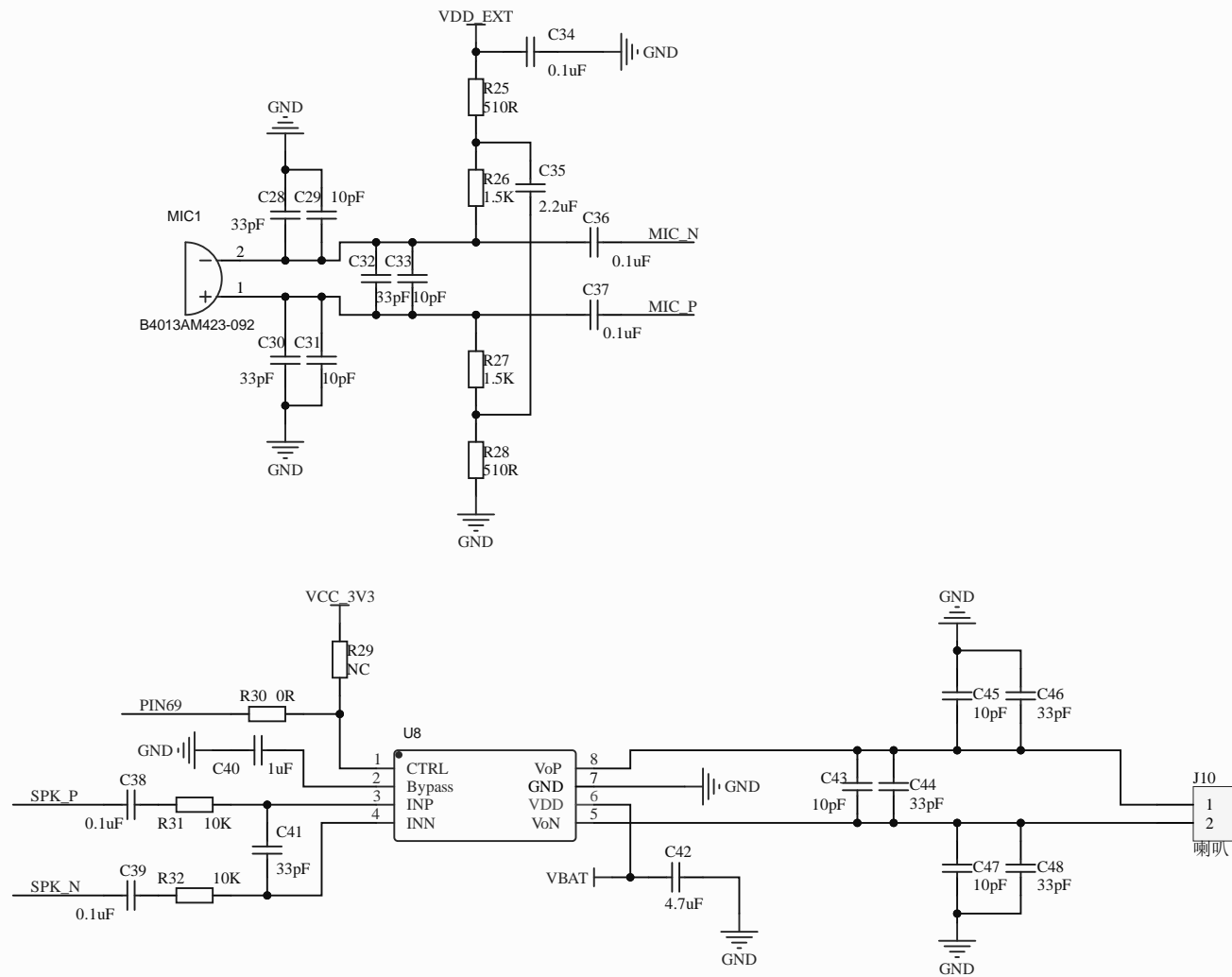
13 EVB

## 9

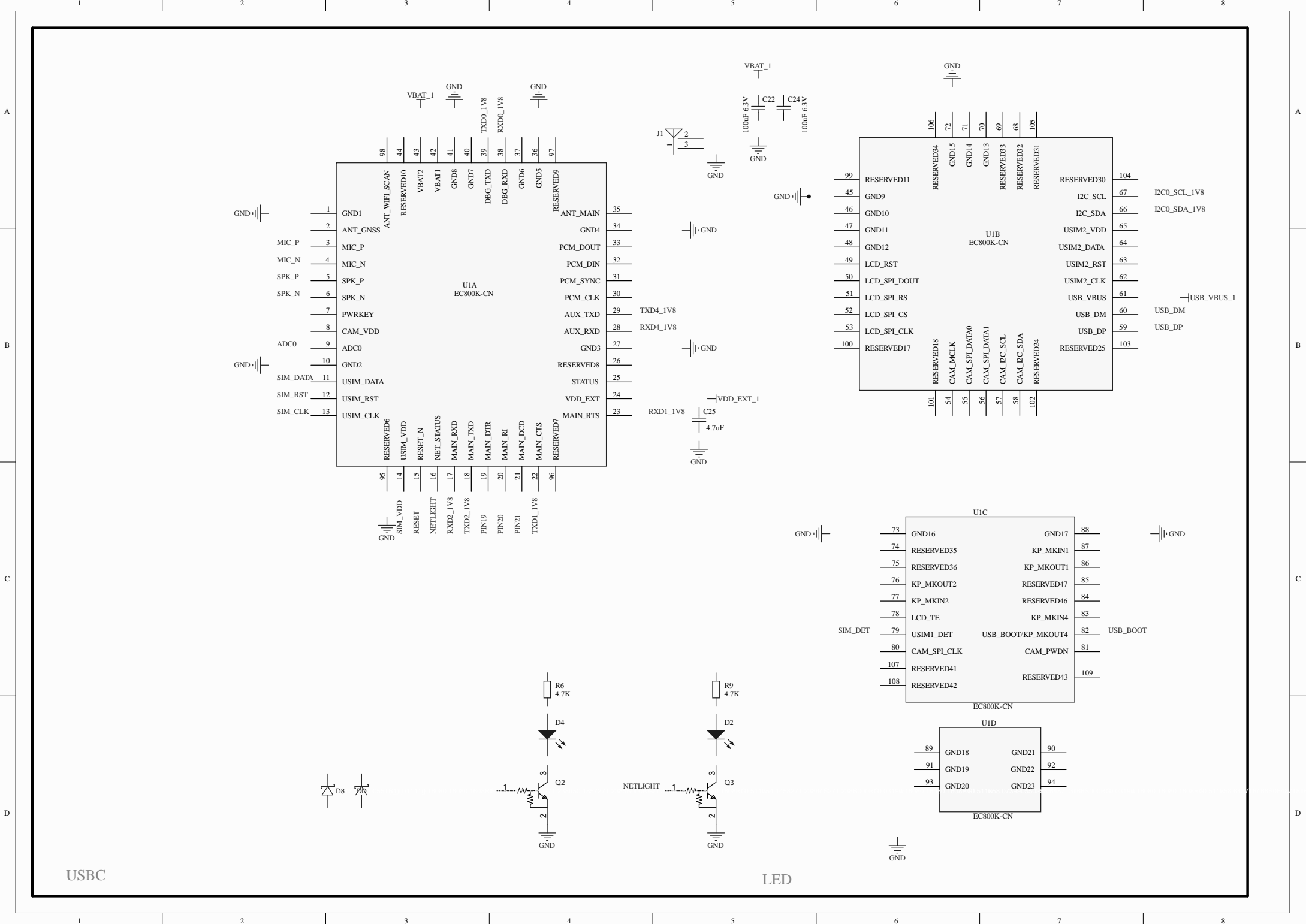
- 1
- 2

## 10 EVB



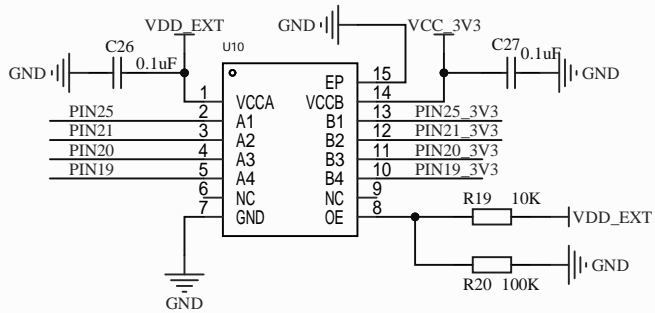
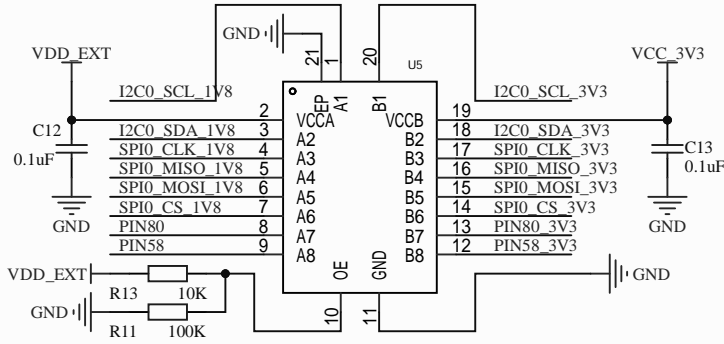
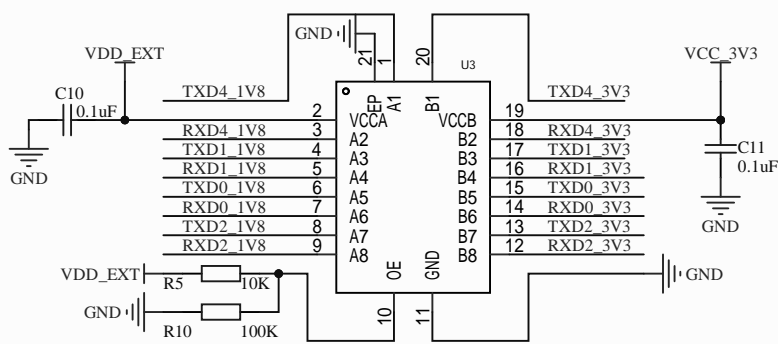


AUDIO

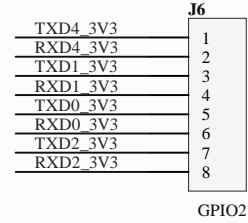
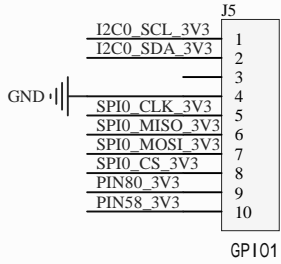
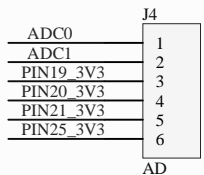
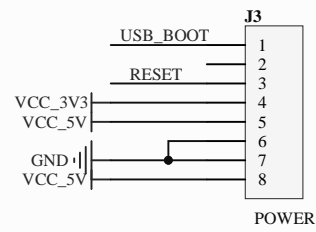
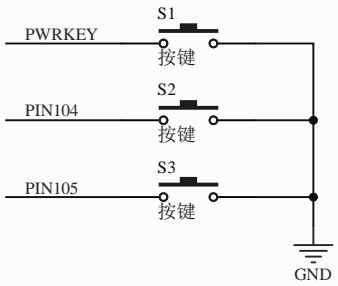


USBC

LED



### 电平转换



### 按键和排母



1

2

3

4

5

6

A

A

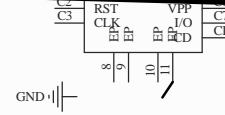
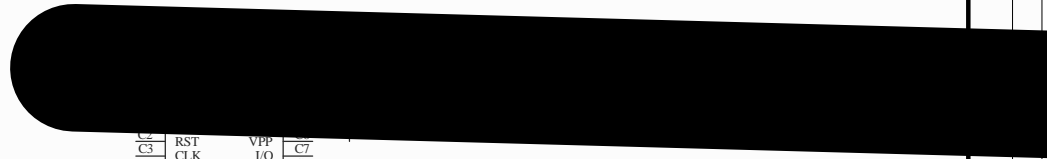
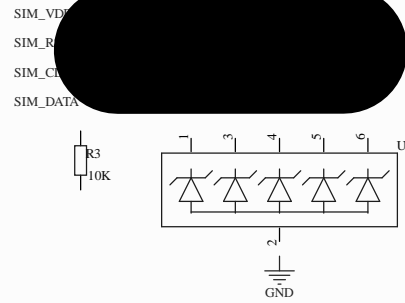
B

C

D

C

D



USIM

1

2

3

4

5

6